

SPOT THE DIFFERENCES

List the differences between these pictures

PIC A



PIC B



- 01 Landy is bigger in pic B
- 02 Wild boar is a hare (bottom right)
- 03 Pine cone next to wild boar/ hare is different
- 04 Deer in pic B (above hare)
- 05 Owl in pic A (on left tree of second row)
- 06 Extra pine cone in top left of pic B
- 07 Eagle flying in pic A (top right)
- 08 Misty clouds in pic A (near eagle)
- 09 Two trees missing in last row of trees near the first mountain peak (pic B)
- 10 Cabin in the woods missing (in pic B behind last row of trees under eagle)

WHO DO THEY BELONG TO?

Match the letters to the vehicle



K G



H J



E B



D A



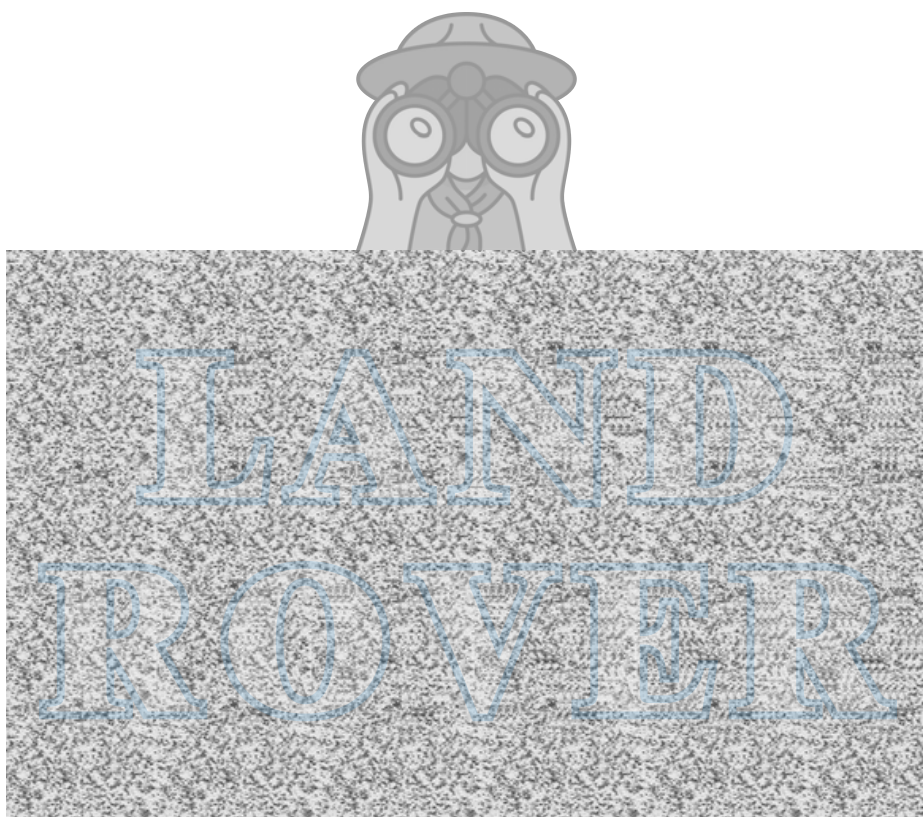
F C



AN OLDIE ...

Remember 3D stereograms from a while back?

**Cross your eyes and stare at the graphic to
discover the words LAND ROVER**



Didn't see it? No worries, Dude didn't either.
These were challenging back then too!

MATCH THE VEHICLES

Write the number next to its match (19-36)



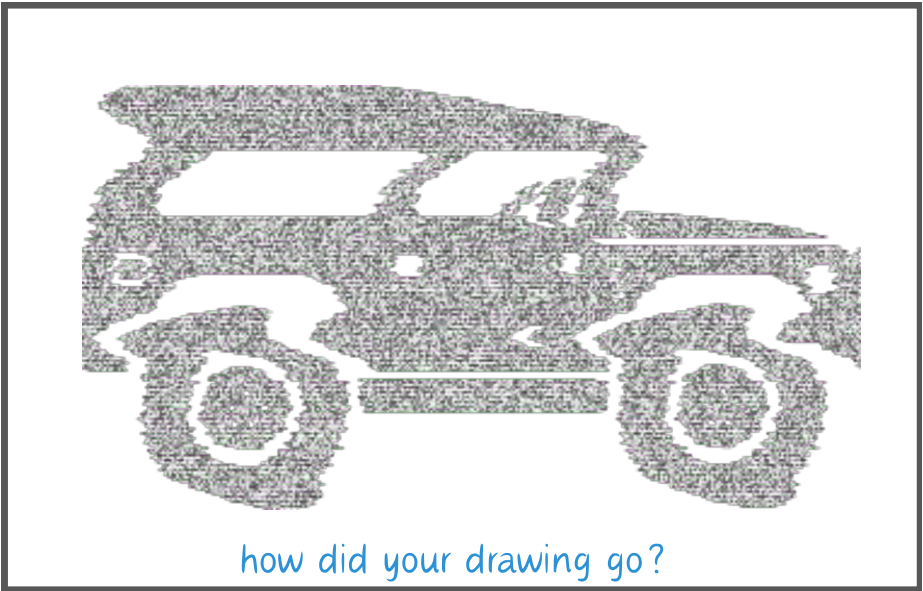
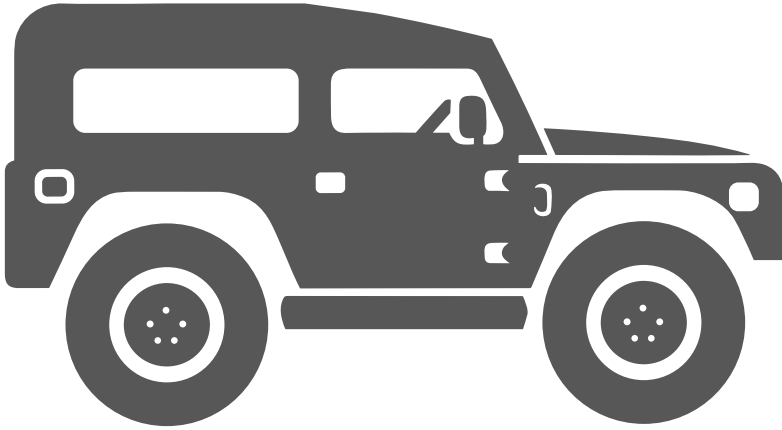
01 **28**
 02 **34**
 03 **36**
 04 **27**
 05 **33**
 06 **21**

07 **23**
 08 **24**
 09 **26**
 10 **20**
 11 **35**
 12 **25**

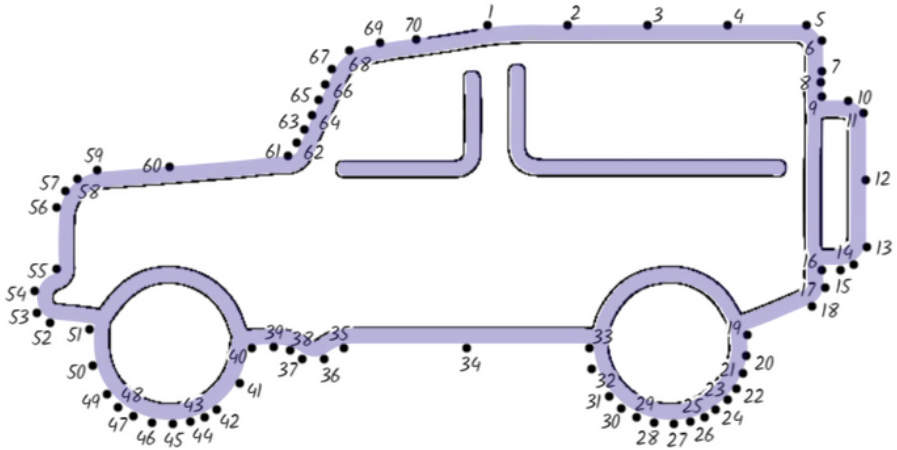
13 **29**
 14 **30**
 15 **22**
 16 **32**
 17 **31**
 18 **19**

LANDY REPLICA

Test your design skills: replicate this drawing



WORLD EXPLORER

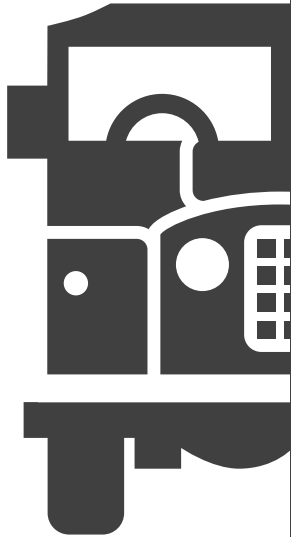


Join the Dots

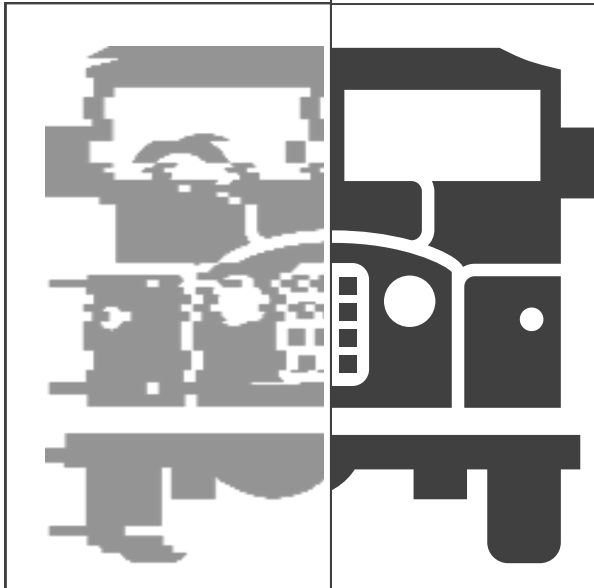


SIMPLICITY IN SERIES

Complete both left and right drawings

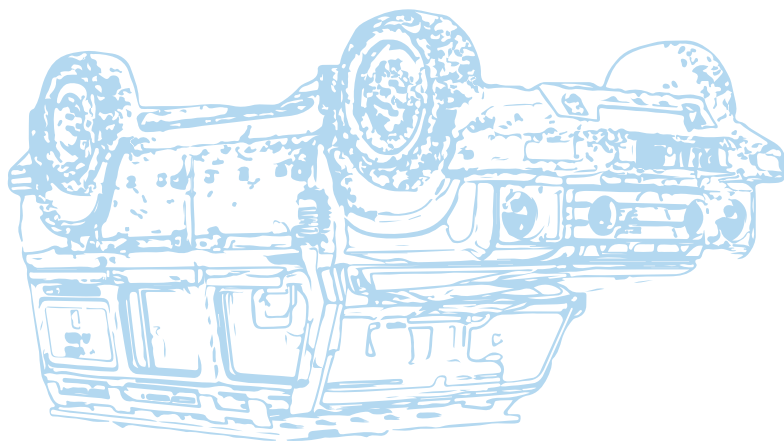
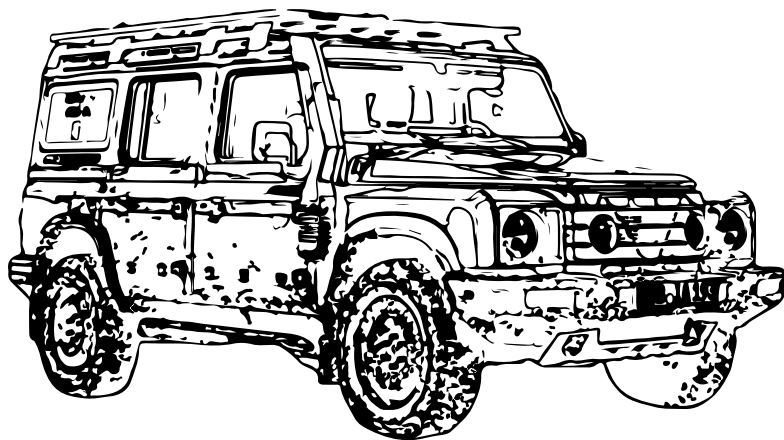


how did
your
drawing
go?



DEFENDER-INSPIRED

Let your inner artist shine!
Replicate this drawing



how did your drawing go?

EQUIPMENT ONE ALWAYS CARRIES IN A LAND ROVER

ADD TO THE LIST

- Jumper cables
- Hammer
- Set of sockets – metric and imperial
- Spanners – metric and imperial
- Tow rope
- Tree strap
- Duct tape
- WD40
- Cable ties
- Favourite mechanic's phone number on speed dial
- *Sense of Humour*
.....
- *Headlamp*
.....
- *GPS*
.....
- *Chamois Cloth*
.....
- *Flip-flops*
.....
-
-

LAND ROVER BUCKET LIST



- Trip to Outer Mongolia

- Retrace the Borneo Camel Trophy

- Fix the transfer case oil leak

- Have a conversation at 60mph

- Average over 20mpg on a level surface

- Fit ~~portal-axes~~ Ashcroft halfshafts

- Cross the Simpson Desert

- Leave home without a towrope

- Attempt to drive a country lane at night

- Wade through roof height floodwaters

LANDY THIS OR THAT

Circle your preferences

Series	or	Defender
Coil springs	or	Leaf springs
LT77	or	R380
Wind-up	or	Slide windows
Wheel arches	or	No arches
Td5	or	2.5N/A
Mud	or	Snow
Checker plate	or	Rusty patina
LED	or	Lucas
MT tyres	or	AT tyres
Alloy	or	Steel

LEFT OR RIGHT?

our choice x

Are you old-school or new-school?





THIS OR THAT

What do you prefer out of these choices?

Write your answer on the line.

Options

The Dude's Choice

Warn or Warrior

WARN

Aircon or Flaps

FLAPS

Manual or Auto

MANUAL

Roof Tent or Ground Tent

ROOF TENT

Lapland or Sahara

SAHARA

Stage 1 or L663

STAGE ONE

Wood or Gas Cooking

WOOD

Deep Dish or Sawtooth

SAWTOOTH

200 or 300

200

RRC or L405

RRC

ALTERNATIVE OPTIONS LIST FOR YOUR CLASSIC DEFENDER

- Shift counter (R380 & LT77 compatible)
- Windshield cloth (winter & rainshowers)
- Fan for gearbox heat (Tdi or older)
- Earplugs (for gearbox whine, diesel clatter)
- Seat padding (for those expeditions to the local)
- Side sunshade (for when travelling east or west)
- Elevator music (for sedate progress in the Alps)
- 5 kg silica gel (helps the damp interior)
- Bailing bucket for the footwell (during rainstorms)
- Additional candles for the headlamps (Lucas)

FACTORY RECALLS

Like the good teams in Solihull, we did our best to provide a trouble-free experience. However, despite our best efforts one mistake did make it past QC (in the best Land Rover tradition, of course). We have noticed an error post-production that needs a recall

....

The Journey of Discovery ended at the Beijing Motor Show, and not in Paris.

Oops. Apologies (see page 85)